

**CRUISE PROSPECTUS FORM**

SHIP NAME: USCCG Healy

OPERATING INSTITUTE OR AGENCY: United States Coast Guard

PROJECT TITLE: Ship of Opportunity science during the 2003 Northwest Passage transit by USCGC Healy

CRUISE DATES (INCLUSIVE): August 19 -August 30, 2003

**ACTION REQUIRED:**

**Research Clearance**

- Request State Dept. to Initiate
- Request State Dept. Advice
- Being Handled Privately – FYI
- None Required – FYI
- Other (Specify on Reverse)

**Port Call Clearance**

- Public Vessel – State Dept. Initiate
- Part of Research Clearance – State Dept. Initiate
- Being Handled by USCG – FYI
- Unusual Problem – State Dept. Assistance

**CRUISE COORDINATOR (name, affiliation, address, phone, fax, e-mail):**

- David Forcucci  PH-206-217-6648 Address: USCGC HEALY
- US Coast Guard  Fax 206-217-6878  1519 Alaska Way S.
- DForcucci@pacnorwest.uscg.mil  Seattle, WA 98134

**CHIEF SCIENTIST (name, affiliation, address, phone, fax, e-mail):**

- David Forcucci PH-206-217-6648 Address: USCGC HEALY
- US Coast Guard Fax 206-217-6878 1519 Alaska Way S.
- DForcucci@pacnorwest.uscg.mil Seattle, WA 98134

NUMBER OF SCIENTISTS:   1  

**SHIP DESCRIPTION:**

LOA  420'  Draft  30'  Gross Tons  16,000   
 Name of Master  Captain Daniel Oliver   
 Number of Crew  75   
 Radio Call Sign  NEPP   
 Emergency Frequency Monitored  CH 16 

FUNDING AGENCY(S): National Science Foundation (NSF), NOAA

COOPERATING INSTITUTION(S): See attached sheets

THE OBJECTIVE OF THIS RESEARCH IS TO: See attached sheets

**ITINERARY:**

Indicate Transit/Port Call/Research & Locations ..... Duration (Inclusive Dates) See attached sheets

ATTACHMENT (Cruise Chart) See attached sheets

Cooperation Institutions:

United States Coast Guard  
National Oceanic and Atmospheric Administration  
National Science Foundation  
University of New Hampshire  
University of Hawaii  
Oregon State University  
Lamont Doherty Earth Observatory  
Institute of Ocean Sciences, B.C. Canada  
Canadian Hydrographic, Ontario, Canada

**The objective of this research is to:** collect ship of opportunity bathymetric, hydrographic and marine mammal population data along the cruise track of USCGC Healy during the North West Passage transit from Thule, Greenland to Barrow Alaska. 1) launch 48 XCTD's at locations between Lancaster Sound and Barrow.2) Conduct Marine Mammal population assessment from ship and helicopter observations 3) Collect underway multibeam (Seabeam 2112) bathymetry data.4) Collect underway Acoustic Doppler Current Profiler (ADCP) data5) Collect underway hydrographic data including temperature and salinity (TSG) and chlorophyll

Itinerary:

Date	Latitude	Longitude	
August 19	76-15.0N	070-00.0W	Thule, Greenland
August 20	74-15.8N	094-07.8W	
August 21	71-17.0N	097-09.9W	
August 22	68-43.7N	102-32.9W	
August 23	68-51.4N	105-21.9W	
August 24	69-01.6N	105-39.2W	
August 25	69-09.8N	116-02.6W	
August 26	70-24.6N	127-13.7W	
August 27	70-09.5N	138-33.8W	
August 28	70-48.0N	147-43.2W	
August 29	71-26.5N	154-02.2W	Barrow, Alaska

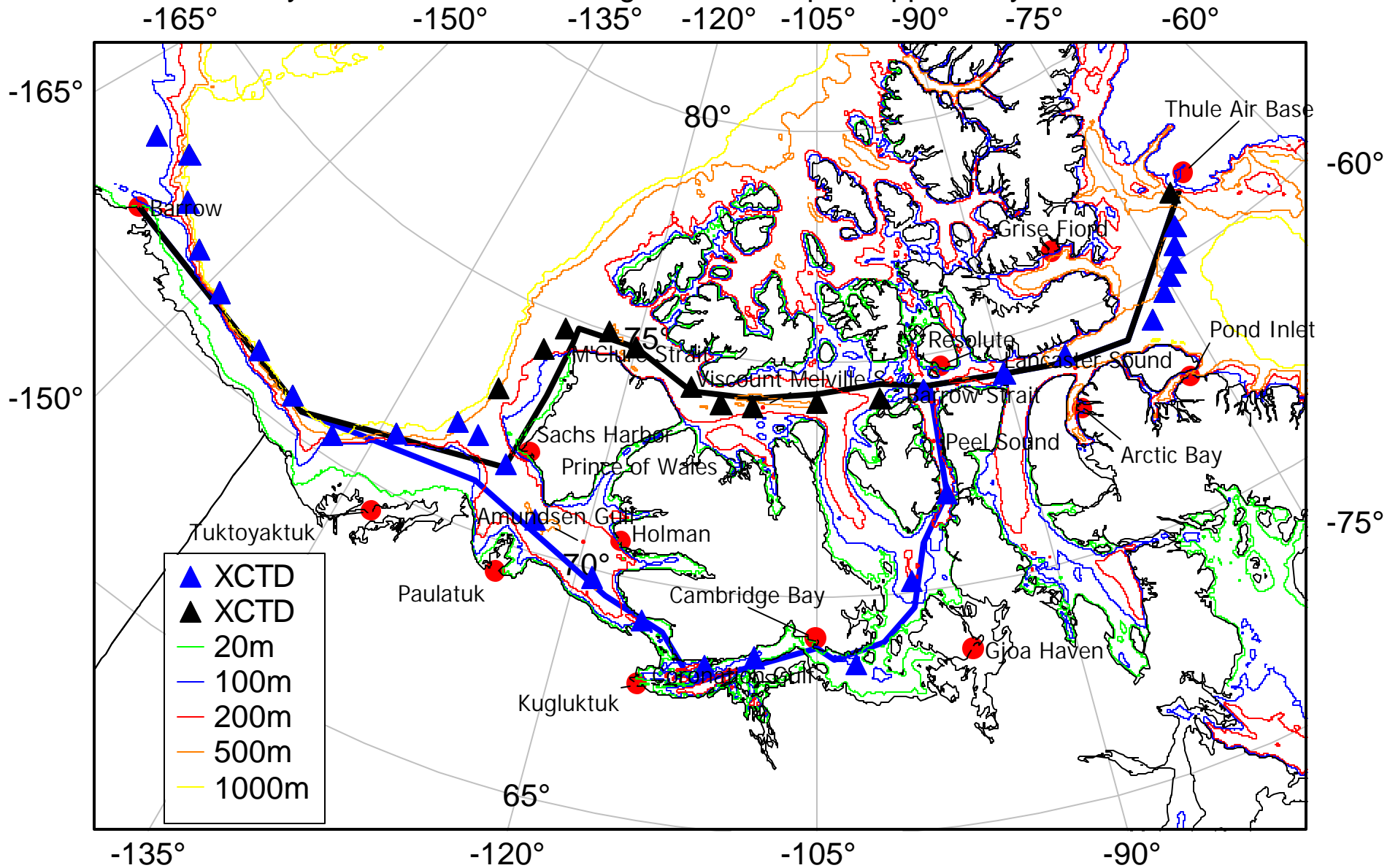
USCGC Healy HLY-03-T, August 19 – August 30, 2003

Approximate XCTD probe launch locations

N Lat	W Long
76.33	-70.75
75.67	-72
75.33	-73
75	-73.67
74.83	-74.67
74.58	-75.67
74.17	-77.5
74.25	-85
74.25	-90
74.25	-96.5
72	-96
70.25	-99
68.58	-102.75
68.67	-108.67
68.42	-111.5
69.17	-115.5
69.83	-119
70.67	-123.5
71.58	-126.5
71.92	-129
72	-130.67
71.17	-134
70.42	-137.5
70.67	-141
71	-144.5
71.33	-149
71.67	-152
72.17	-155
72.83	-157.5
72.5	-160

Figure USCGC Healy Northwest Passage transit 2003 ship of opportunity cruise. Thule to Barrow. Track lines indicate possible transit routes through the NW passage. Triangles indicate the estimated locations for the XCTD launches.

# USCGC Healy 2003 Northwest Passage transit- Ship of Opportunity Science



Scale: 1:8969086 at Latitude 90°